



Devonport Southwick Street,  
Hyde Park, W2

Asking Price £685,000, Leasehold

NAPIER WATT

T: 0207 935 0011  
E: [enquiries@napierwatt.co.uk](mailto:enquiries@napierwatt.co.uk)  
W: [napierwatt.co.uk](http://napierwatt.co.uk)

35 Berkeley Square, Mayfair, London, W1J 5BF











## Description

A very well maintained two double bedroom apartment located in the popular Hyde Park Estate.

The property has undergone refurbishment to a fresh standard and is arranged on the first floor of this prestigious purpose built block with 24 hour concierge and lovely communal gardens. The apartment further benefits from two large double bedrooms, spacious reception room and contemporary fully fitted kitchen. Marble Arch Underground Station is a short walk away.

Entrance Hall : Reception Room : Fitted Kitchen : 2 Double Bedrooms : Bathroom : Guest WC : Porter : Lifts : EPC B

## Key Features

- 24 HOUR PORTERAGE
- COMMUNAL GARDEN
- LIFTS

## Terms

TENURE : 99 years from 25 December 1986 ie 62 years  
 Service Charge ; £11.560 pa payable quarterly  
 Ground Rent £500 pa  
 Council Tax : Westminster Band F

## Southwick Street, W2

Approximate Gross Internal Floor Area : 776 sq ft / 72.1 sq m

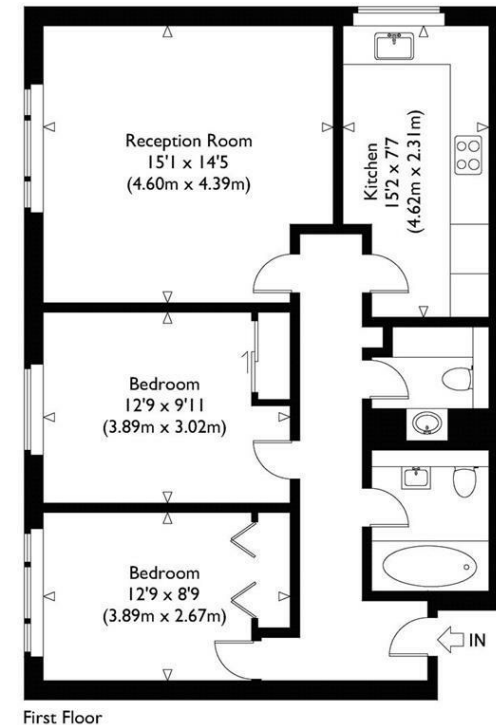


Illustration for identification purposes only, measurements are approximate, not to scale.

IMPORTANT: We would inform prospective purchasers that these sales particulars have been prepared as a general guide only. A detailed survey has not been carried out, nor the services, appliances and fittings tested. Room sizes should not be relied upon for furnishing purposes and are approximate. If floor plans are included, they are for guidance only and illustration purposes only and may not be to scale. If there are any important matters likely to affect your decision to buy, please contact us before viewing the property.